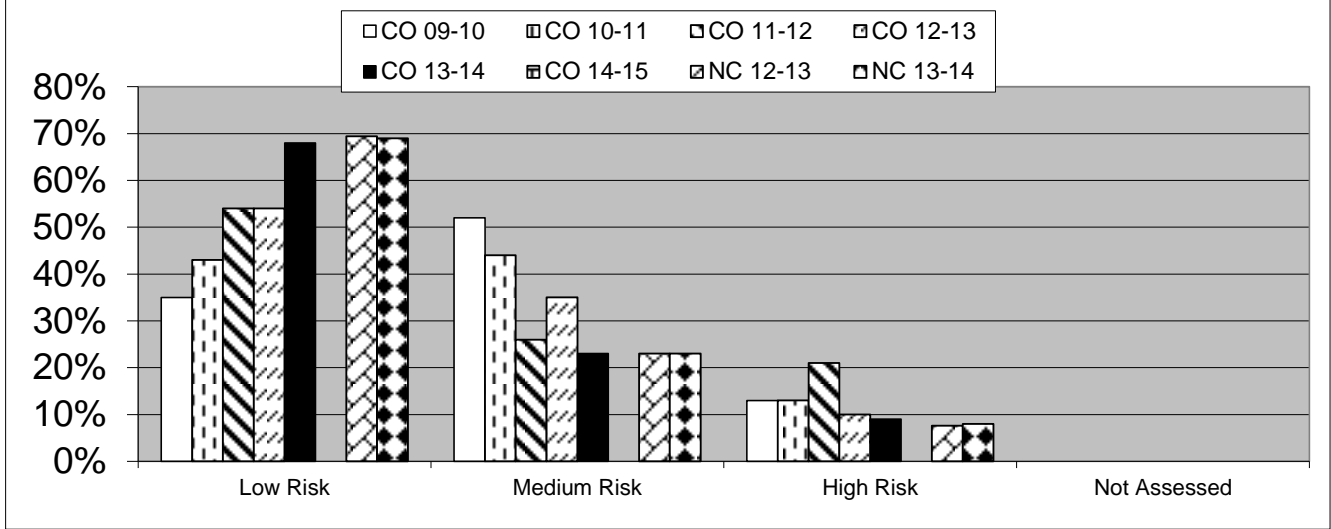


**RISK ASSESSMENT COMPARISON DATA**

**RICHMOND COUNTY**

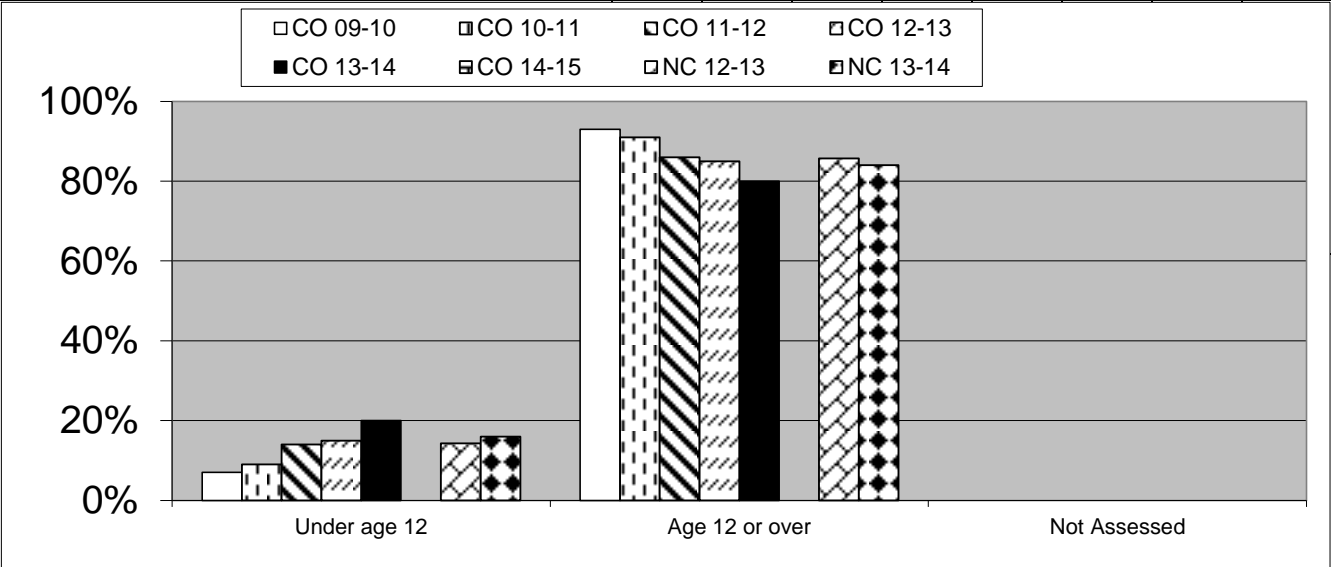
|                            | CO 09-10 | CO 10-11 | CO 11-12 | CO 12-13 | CO 13-14 | CO 14-15 | NC 12-13 | NC 13-14 |
|----------------------------|----------|----------|----------|----------|----------|----------|----------|----------|
| <b>Total Adjudications</b> | 112      | 112      | 78       | 79       | 94       |          | 16,584   | 14,218   |

| Overall Risk Level | CO 09-10 | CO 10-11 | CO 11-12 | CO 12-13 | CO 13-14 | CO 14-15 | NC 12-13 | NC 13-14 |
|--------------------|----------|----------|----------|----------|----------|----------|----------|----------|
| Low Risk           | 35%      | 43%      | 54%      | 54%      | 68%      |          | 69%      | 69%      |
| Medium Risk        | 52%      | 44%      | 26%      | 35%      | 23%      |          | 23%      | 23%      |
| High Risk          | 13%      | 13%      | 21%      | 10%      | 9%       |          | 8%       | 8%       |
| Not Assessed       |          |          |          |          |          |          |          |          |



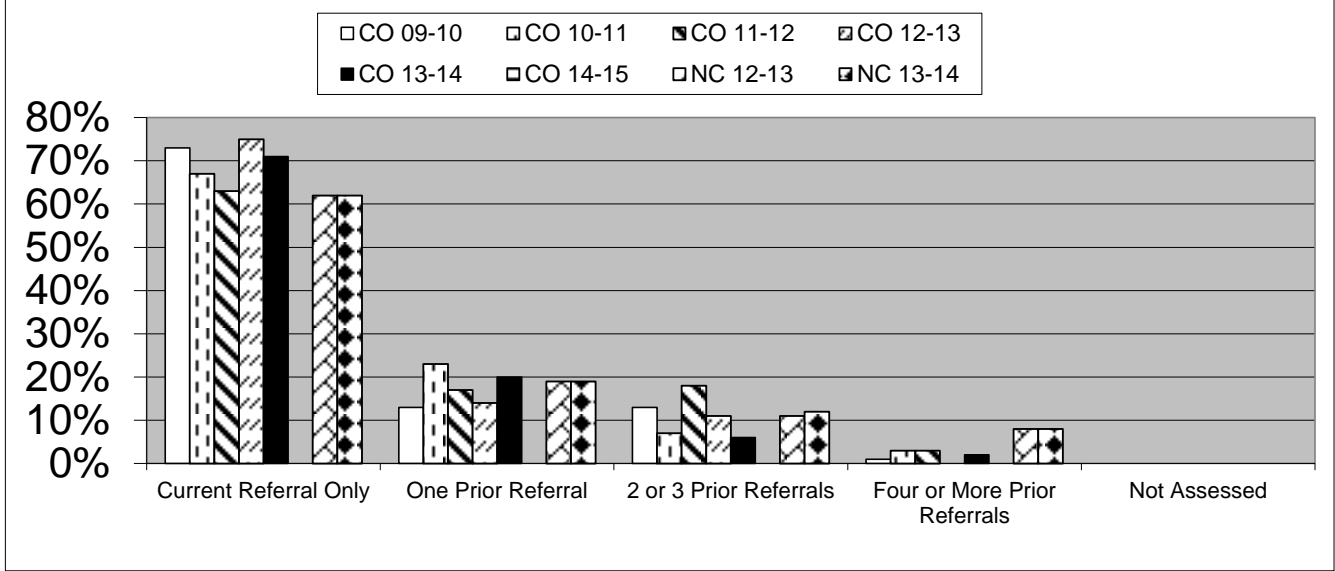
**Observations:** Overall in Richmond County for the five year period on average 36% of youth are medium risk level of reoffending; and on average 13.2% of youth are high risk level of reoffending. NOTE/OBSERVATION: There were some significant changes in youth with medium risk levels compare to the State average of 23%.

| R1 - Age for First Delinquent Offense Alleged in a Complaint | CO 09-10 | CO 10-11 | CO 11-12 | CO 12-13 | CO 13-14 | CO 14-15 | NC 12-13 | NC 13-14 |
|--|----------|----------|----------|----------|----------|----------|----------|----------|
| Under age 12   | 7%       | 9%       | 14%      | 15%      | 20%      |          | 14%      | 16%      |
| Age 12 or over   | 93%      | 91%      | 86%      | 85%      | 80%      |          | 86%      | 84%      |
| Not Assessed   |          |          |          |          |          |          |          |          |



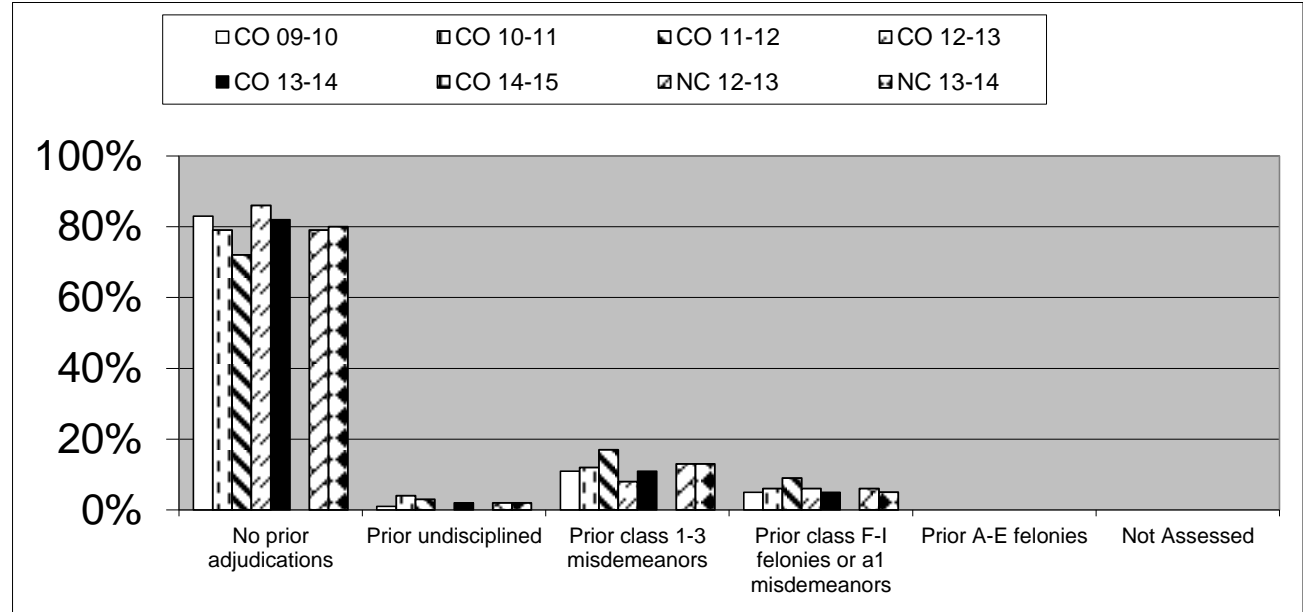
**R1 Observations:** County data for the five year period reflects that on average 87% of youth are age 12 years or older at the time of the 1st delinquent offense alleged in a complaint.

| <b>R2 - Number of Undisciplined or Delinquent Referrals at Intake</b> | <b>CO 09-10</b> | <b>CO 10-11</b> | <b>CO 11-12</b> | <b>CO 12-13</b> | <b>CO 13-14</b> | <b>CO 14-15</b> | <b>NC 12-13</b> | <b>NC 13-14</b> |
|---|-----------------|-----------------|-----------------|-----------------|-----------------|-----------------|-----------------|-----------------|
| Current Referral Only   | 73%             | 67%             | 63%             | 75%             | 71%             |                 | 62%             | 62%             |
| One Prior Referral  | 13%             | 23%             | 17%             | 14%             | 20%             |                 | 19%             | 19%             |
| 2 or 3 Prior Referrals  | 13%             | 7%              | 18%             | 11%             | 6%              |                 | 11%             | 12%             |
| Four or More Prior Referrals  | 1%              | 3%              | 3%              | 0%              | 2%              |                 | 8%              | 8%              |
| Not Assessed  |                 |                 |                 |                 |                 |                 |                 |                 |



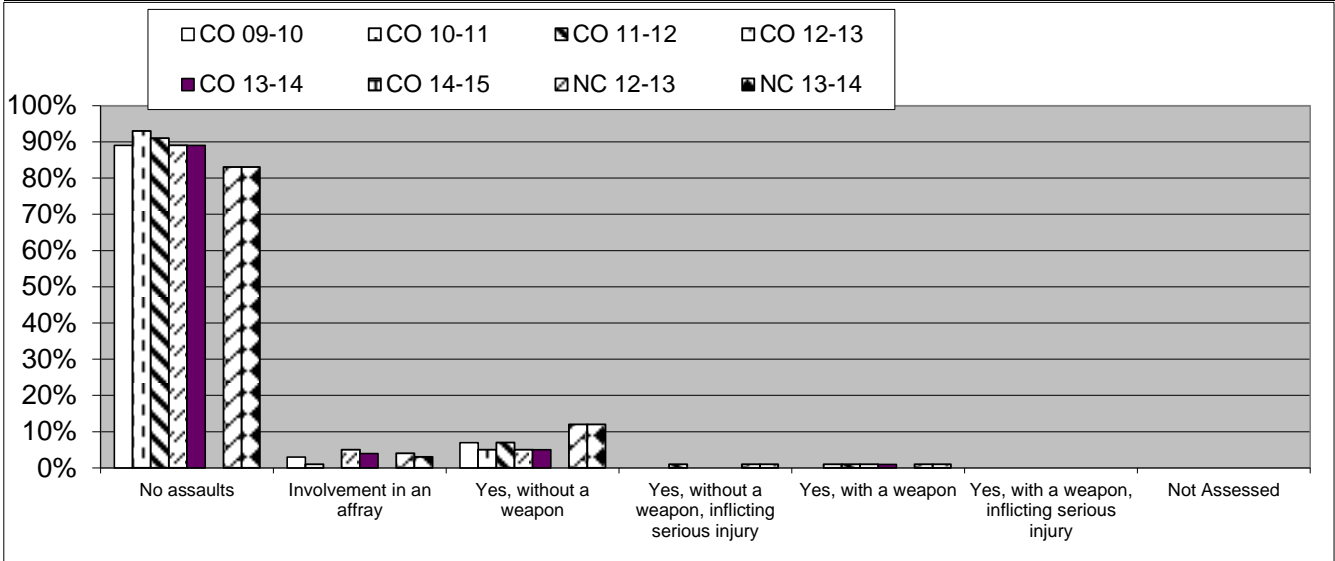
**R2 Observations:**

| <b>R3 - Most Serious Prior Adjudication</b> | <b>CO 09-10</b> | <b>CO 10-11</b> | <b>CO 11-12</b> | <b>CO 12-13</b> | <b>CO 13-14</b> | <b>CO 14-15</b> | <b>NC 12-13</b> | <b>NC 13-14</b> |
|---|-----------------|-----------------|-----------------|-----------------|-----------------|-----------------|-----------------|-----------------|
| No prior adjudications                      | 83%             | 79%             | 72%             | 86%             | 82%             |                 | 79%             | 80%             |
| Prior undisciplined                         | 1%              | 4%              | 3%              | 0%              | 2%              |                 | 2%              | 2%              |
| Prior class 1-3 misdemeanors                | 11%             | 12%             | 17%             | 8%              | 11%             |                 | 13%             | 13%             |
| Prior class F-I felonies or a1 misdemeanors | 5%              | 6%              | 9%              | 6%              | 5%              |                 | 6%              | 5%              |
| Prior A-E felonies                          | 0%              | 0%              | 0%              | 0%              | 0%              |                 | 0%              | 0%              |
| Not Assessed                                |                 |                 |                 |                 |                 |                 |                 |                 |



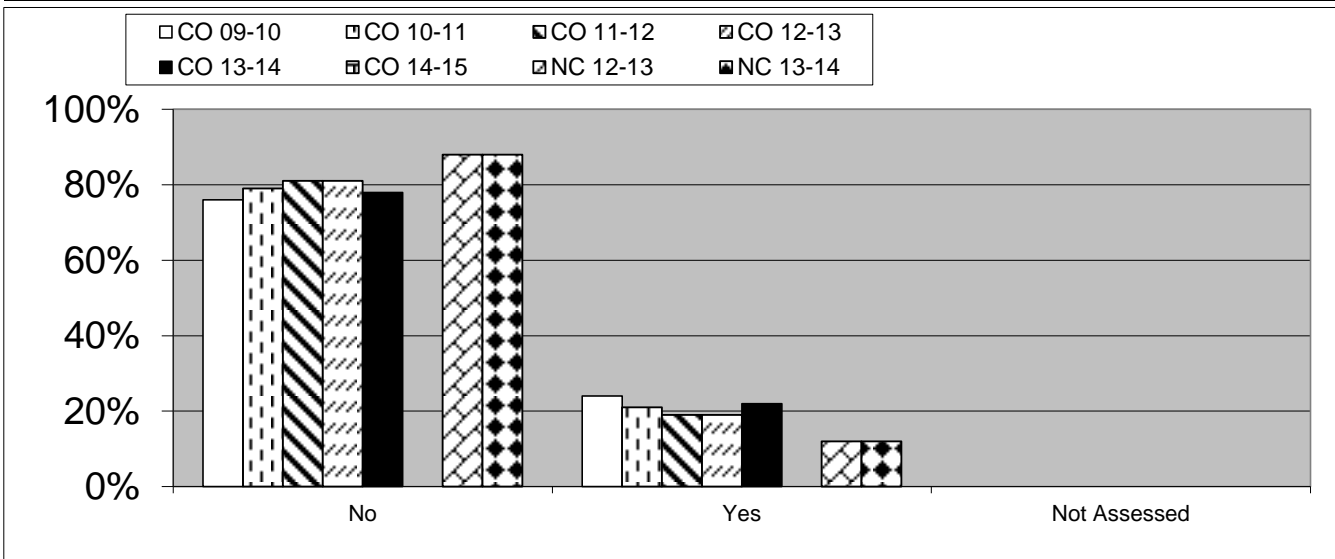
**R3 Observations:**

| R4 - Prior Assaults                              | CO 09-10 | CO 10-11 | CO 11-12 | CO 12-13 | CO 13-14 | CO 14-15 | NC 12-13 | NC 13-14 |
|--|----------|----------|----------|----------|----------|----------|----------|----------|
| No assaults                                      | 89%      | 93%      | 91%      | 89%      | 89%      |          | 83%      | 83%      |
| Involvement in an affray                         | 3%       | 1%       | 0%       | 5%       | 4%       |          | 4%       | 3%       |
| Yes, without a weapon                            | 7%       | 5%       | 7%       | 5%       | 5%       |          | 12%      | 12%      |
| Yes, without a weapon, inflicting serious injury | 0%       | 0%       | 1%       | 0%       | 0%       |          | 1%       | 1%       |
| Yes, with a weapon                               | 0%       | 1%       | 1%       | 1%       | 1%       |          | 1%       | 1%       |
| Yes, with a weapon, inflicting serious injury    | 0%       | 0%       | 0%       | 0%       | 0%       |          | 0%       | 0%       |
| Not Assessed                                     |          |          |          |          |          |          |          |          |



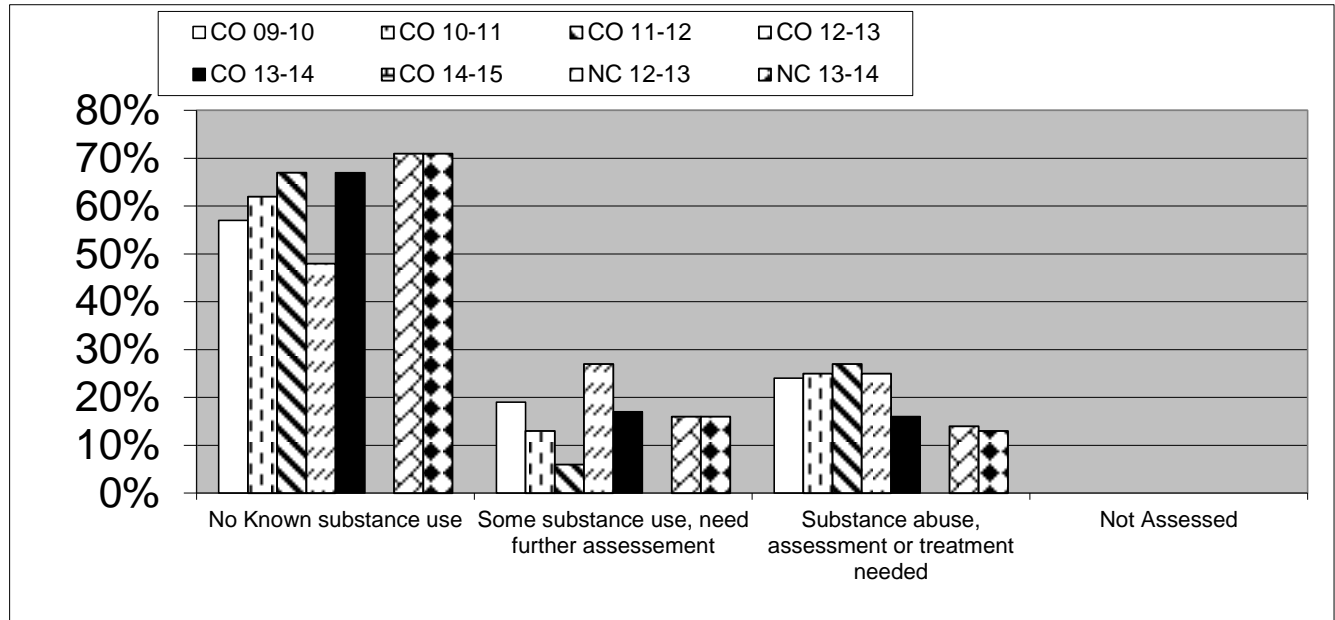
**R4 Observations:**

| R5 - Runaway from Home or Placement | CO 09-10 | CO 10-11 | CO 11-12 | CO 12-13 | CO 13-14 | CO 14-15 | NC 12-13 | NC 13-14 |
|-------------------------------------|----------|----------|----------|----------|----------|----------|----------|----------|
| No                                  | 76%      | 79%      | 81%      | 81%      | 78%      |          | 88%      | 88%      |
| Yes                                 | 24%      | 21%      | 19%      | 19%      | 22%      |          | 12%      | 12%      |
| Not Assessed                        |          |          |          |          |          |          |          |          |



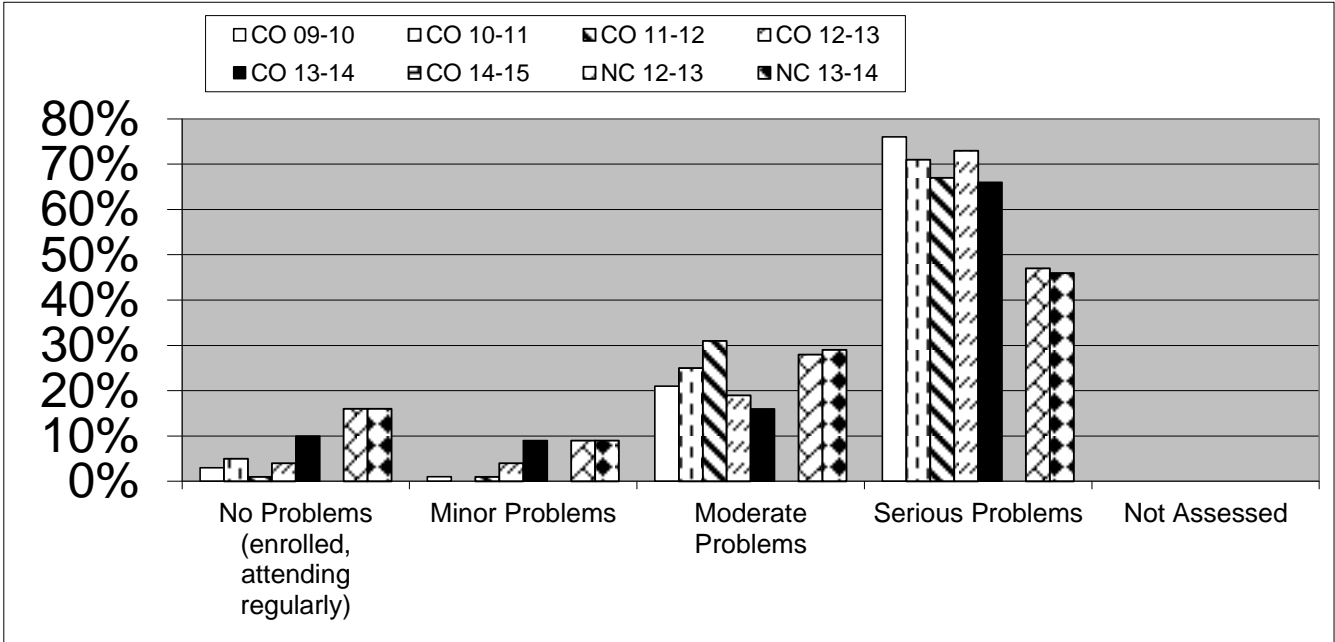
**R5 Observations:** There was an average of 21% of youth that were considered ran away from home or placement for the five year period compared to the State average of 12% in FY 12-13 and FY 13-14.

| R6 - Known Use - Alcohol, Illegal Drugs (prior 12 months) | CO 09-10 | CO 10-11 | CO 11-12 | CO 12-13 | CO 13-14 | CO 14-15 | NC 12-13 | NC 13-14 |
|---|----------|----------|----------|----------|----------|----------|----------|----------|
| No Known substance use                                    | 57%      | 62%      | 67%      | 48%      | 67%      |          | 71%      | 71%      |
| Some substance use, need further assesement               | 19%      | 13%      | 6%       | 27%      | 17%      |          | 16%      | 16%      |
| Substance abuse, assessment or treatment needed           | 24%      | 25%      | 27%      | 25%      | 16%      |          | 14%      | 13%      |
| Not Assessed  |          |          |          |          |          |          |          |          |



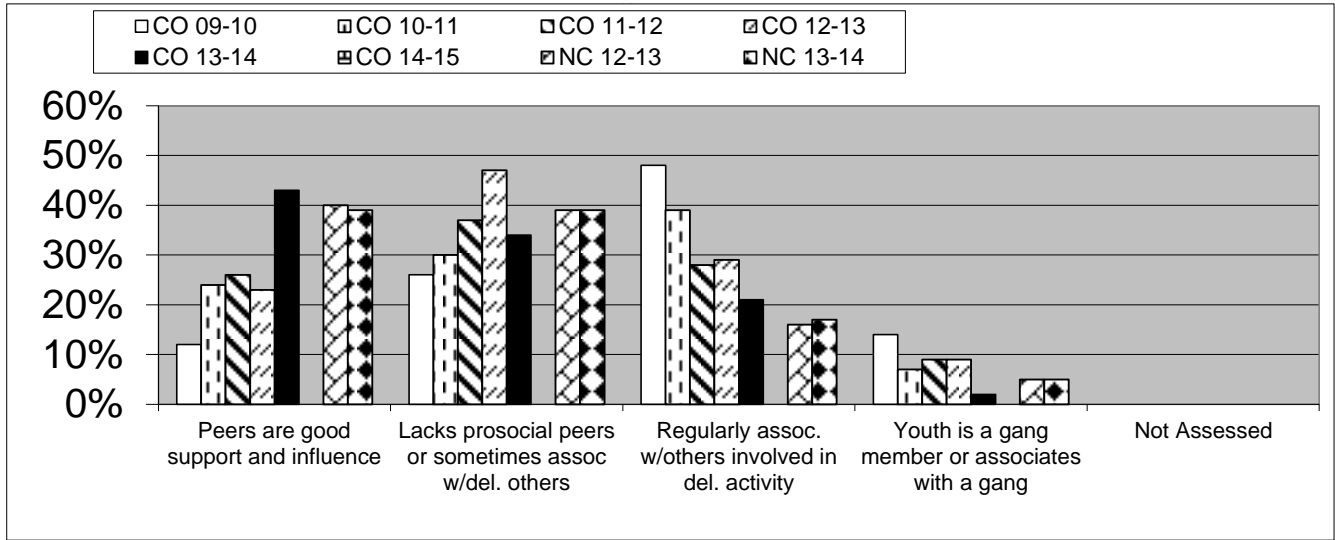
**R6 Observations:** There was an average of 23.4% of youth that reported some substance abuse use, assessment or treatment needed for the five year period compared to the State average of 14% for FY 12-13 and FY 13-14.

| R7 - School Behavior Problems (prior 12 months) | CO 09-10 | CO 10-11 | CO 11-12 | CO 12-13 | CO 13-14 | CO 14-15 | NC 12-13 | NC 13-14 |
|---|----------|----------|----------|----------|----------|----------|----------|----------|
| No Problems (enrolled, attending regularly)     | 3%       | 5%       | 1%       | 4%       | 10%      |          | 16%      | 16%      |
| Minor Problems                                  | 1%       | 0%       | 1%       | 4%       | 9%       |          | 9%       | 9%       |
| Moderate Problems                               | 21%      | 25%      | 31%      | 19%      | 16%      |          | 28%      | 29%      |
| Serious Problems                                | 76%      | 71%      | 67%      | 73%      | 66%      |          | 47%      | 46%      |
| Not Assessed                                    |          |          |          |          |          |          |          |          |



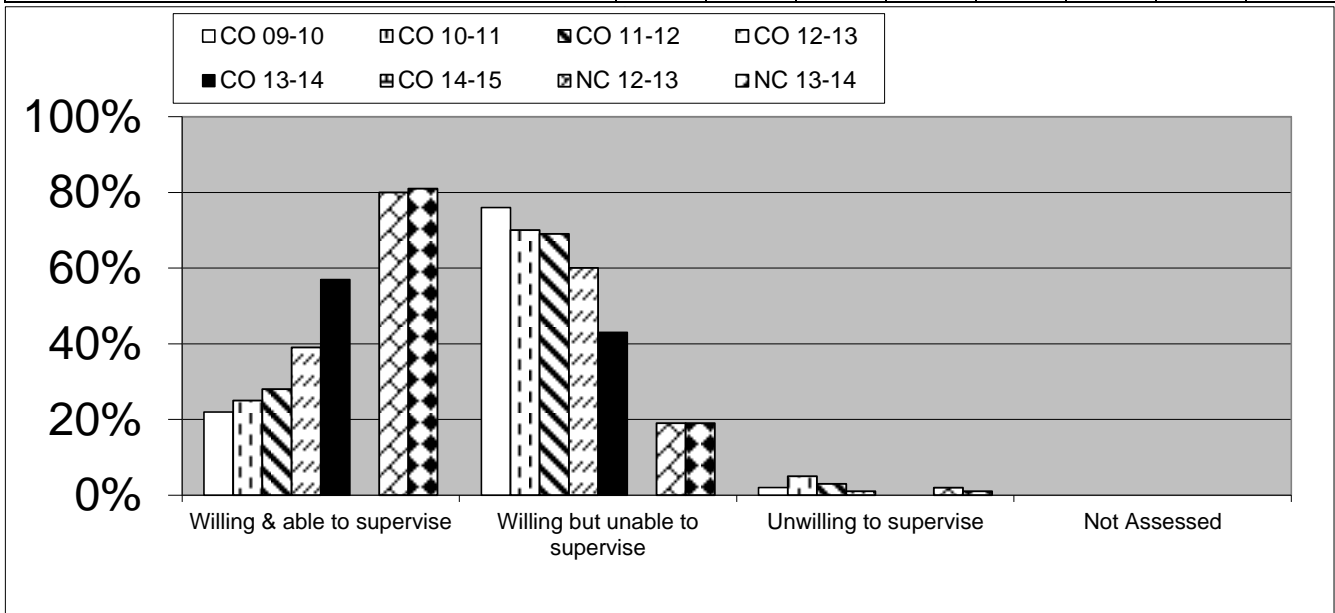
**R7 Observations:** County data for the five year period reflects that on average 70.6% of youth reported having Serious School Behavior Problems. NOTE/OBSERVATION: There is a significant increase compared to the State average of 47% in FY 12-13 and FY 13-14.

| <b>R8 - Relationships with Peers</b>                   | CO 09-10 | CO 10-11 | CO 11-12 | CO 12-13 | CO 13-14 | CO 14-15 | NC 12-13 | NC 13-14 |
|--|----------|----------|----------|----------|----------|----------|----------|----------|
| Peers are good support and influence                   | 12%      | 24%      | 26%      | 23%      | 43%      |          | 40%      | 39%      |
| Lacks prosocial peers or sometimes assoc w/del. others | 26%      | 30%      | 37%      | 47%      | 34%      |          | 39%      | 39%      |
| Regularly assoc. w/others involved in del. activity    | 48%      | 39%      | 28%      | 29%      | 21%      |          | 16%      | 17%      |
| Youth is a gang member or associates with a gang       | 14%      | 7%       | 9%       | 9%       | 2%       |          | 5%       | 5%       |
| Not Assessed   |          |          |          |          |          |          |          |          |



**R8 Observations:** County data for the five year period reflects that on average 69.8% of youth lacks pro-social peers and/or sometime and/or regularly associates with negative/delinquent peers.

| <b>R9 - Parental Supervision</b> | CO 09-10 | CO 10-11 | CO 11-12 | CO 12-13 | CO 13-14 | CO 14-15 | NC 12-13 | NC 13-14 |
|----------------------------------|----------|----------|----------|----------|----------|----------|----------|----------|
| Willing & able to supervise      | 22%      | 25%      | 28%      | 39%      | 57%      |          | 80%      | 81%      |
| Willing but unable to supervise  | 76%      | 70%      | 69%      | 60%      | 43%      |          | 19%      | 19%      |
| Unwilling to supervise           | 2%       | 5%       | 3%       | 1%       | 0%       |          | 2%       | 1%       |
| Not Assessed                     |          |          |          |          |          |          |          |          |



**R9 Observations:** County data for the five year period reflects that on average 63.6% of youth's parents are willing, but unable to supervise their youth. NOTE/OBSERVATION: There is a significant increase compared to the State average of 19% in FY 12-13 and FY 13-14.